



ARDEN ANGLICAN SCHOOL

Uniform

**WEARING YOUR
UNIFORM WITH PRIDE**

ARDEN



Where Growth Meets Joy

ARDEN UNIFORM

Arden students are expected to wear their uniform with pride. Students represent the School every day whether on public transport, during an excursion or as members of our local communities. We remain vigilant with uniform standards and ask that parents support our efforts to ensure the compulsory Arden uniform is always well presented, clean and in good order. All uniform items for students from Pre-School to Year 12 (except shoes) are only available from Noone School Wear at the Arden Uniform Shop or the Noone Chatswood store.

The Arden Uniform Shop is located at Suite 2, 44-46 Oxford Street, Epping. P: 02 8358 5779

Email: Arden@noone.com.au.

Opening times (term time only) are Tuesday, between 8am and 4pm, Wednesday, between 8am and 12noon and Thursday, between 8am and 4pm. There is parking available on Oxford Street and there is no need to enter school grounds to access the shop.

The Noone Chatswood store is located at Suite 1, 328 High Street, Chatswood. P: 02 9436 1700

Email: Chatswood@noone.com.au.

There is ample under cover parking available.

Opening times are Monday to Friday, between 9am and 5pm and Saturday, between 9am and 1pm (closed public holidays).

If you cannot attend the stores in person you are able to place orders online via

<https://www.noone.com.au/school/arden-anglican-school>.

Delivery options are:

- Click and collect at Arden Uniform store
- Click and collect at Noone Chatswood store
- Post to nominated address (a flat fee applies)
- Collect from Junior Campus on a Tuesday and Thursday (Term time ONLY). Orders must be placed prior to 10am on these days to ensure same day delivery.

All information including extended opening times and uniform fitting appointments are available via our School's portal, Schoolbox, or via the Noone website.

GENERAL GUIDELINES

Please note the following general guidelines:

- Girls are required to wear their dress or skirt at knee length.
- Boys are expected to have their shirt tucked in and the top button done up on their shirt.
- The boys' tie is compulsory and must be worn correctly.
- Hair is always to be neat and tidy.
- Girls' hair that is longer than shoulder length must be tied back with green and/or white hair accessories.
- Boys' hair should be cut short. Tapered, fade, undercut or buzz cuts are not permitted.
- Makeup and nail polish are not to be worn at School.
- Jewellery, including necklaces and chains, is not permitted (medical tags excluded). Girls with pierced ears may only wear one pair of plain studs (no sleepers) in their ear lobes. Boys are not to wear jewellery of any kind, excluding a watch.
- Senior boys are to be clean shaven.
- Black leather lace-up school shoes are required for the formal uniform.
- Runners are required for the sports uniform and need to be suitable for sport and PE activities.



Summer

Worn in Terms 1 and 4.

Summer dress with green socks and black Velcro™ shoes.

Anklet socks that do not show above the shoe are not permitted. The socks must fold over and sit above the shoe.

Winter

Worn in Terms 2 and 3.

Track top and track pants with short or long-sleeved Arden crested polo shirt based on student House.

Arden sports socks and white runners suitable for sport and PE activities.

There is no Physical Education (PE) Uniform for Pre-School students.



Summer

Worn in Terms 1 and 4.

Crested short-sleeved polo shirt based on student House, crested shorts with Arden sports socks and white runners suitable for sport and PE activities.

Winter

Worn in Terms 2 and 3.

Track top and track pants with short or long-sleeved Arden crested polo shirt based on student House.

Arden sports socks and white runners suitable for sport and PE activities.

There is no Physical Education (PE) Uniform for Pre-School students.



Summer

Worn in Terms 1 and 4.

Summer dress with green socks and black lace-up leather school shoes.

Panama hat is worn to and from School every day.

Blazer is optional but can be worn on cooler days or to and from School.

Jumper or vest is optional but can be worn at School, or under the blazer to and from School. The jumper or vest cannot be worn on their own to and from School.

Anklet socks that do not show above the shoe are not permitted. The socks must fold over and sit above the shoe.

Winter

Worn in Terms 2 and 3.

Tunic with long sleeved white shirt and tie and black leather lace-up school shoes (note: the tie shown above is specific to K - Year 6).

Green knee-high socks or green tights (note: for School photos or excursions, the green knee-high socks must be worn).

Blazer must be worn to and from School.

Jumper or vest is worn at School or under blazer to and from School. The jumper or vest cannot be worn on their own to and from School.



Summer

Worn in Terms 1 and 4.

Grey shorts with short sleeved white shirt, School tie, green knee-high socks and black leather lace-up school shoes (note: the tie shown above is specific to K - Year 6).

The baggy green cap is worn to and from School.

Blazer is optional but can be worn to and from School.

Jumper or vest is optional but can be worn at School, or under the blazer to and from School. The jumper or vest cannot be worn on their own to and from School.

Winter

Worn in Terms 2 and 3.

Grey shorts with long sleeved white shirt, School tie, green knee-high socks and black leather lace-up school shoes.

Grey trousers are optional (note: for School photos or excursion, the grey shorts must be worn). If trousers are selected, short grey socks must be worn.

Blazer must be worn to and from School.

Jumper is optional but can be worn at School or under blazer to and from School. The jumper must not be worn on its own to and from School.

Shorts and trousers must not be substituted for other styles/brands.



Summer

Worn in Terms 1 and 4.

Summer dress with white socks and black lace-up leather school shoes.

Blazer is optional in Terms 1 and 4 but can be worn on cooler days or to and from School.

Jumper is optional but can be worn at School, or under the blazer to and from School. The jumper must not be worn on its own to and from School.

Anklet socks that do not show above the shoe are not permitted. The socks must fold over and sit above the shoe.

Winter

Worn in Terms 2 and 3.

Light grey plaid skirt or grey trousers and crested white blouse including the tie tab, with either green knee-high socks or green tights and black leather lace-up school shoes (note: for School photos or excursions, the green knee-high socks must be worn).

Blazer is compulsory in Terms 2 and 3 when travelling to and from School.

Jumper is optional but can be worn at School, or under the blazer to and from School. The jumper must not be worn on its own to and from School.



Summer/Winter

Worn all year.

Grey trousers with short sleeved white crested shirt, grey socks, tie, black belt and black leather lace-up school shoes (note: the tie shown above is specific to Years 7-9).

Blazer is optional in Terms 1 and 4 but can be worn on cooler days or to and from School. Blazer is compulsory in Terms 2 and 3 when travelling to and from School.

Jumper is optional but can be worn at School, or under the blazer to and from School. The jumper must not be worn on its own to and from School.

Trousers must not be substituted for other styles/brands.



Summer

Dark grey plaid skirt or grey trousers with crested white blouse including the tie tab, white socks and black leather lace-up school shoes.

Blazer is optional in Terms 1 and 4 but can be worn on cooler days or to and from School.

Jumper is optional but can be worn at School, or under the blazer to and from School. The jumper must not be worn on its own to and from School.

Anklet socks that do not show above the shoe are not permitted. The socks must fold over and sit above the shoe.

Trousers must not be substituted for other styles/brands.

Winter

Dark grey plaid skirt with crested white blouse including the tie tab, with either green knee-high socks or green tights and black leather lace-up school shoes (note: for School photos or excursions the green knee-high socks must be worn) or grey trousers with crested white blouse including the tie tab, green knee-high socks and black leather lace-up school shoes.

Blazer is compulsory in Terms 2 and 3 when travelling to and from School.

Jumper is optional but can be worn at School, or under the blazer to and from School. The jumper must not be worn on its own to and from School.

Trousers must not be substituted for other styles/brands.



Summer/Winter

Worn all year.

Grey trousers with short sleeved white crested shirt, grey socks, tie, black belt and black leather lace-up school shoes (note: the tie shown above is specific to Years 10-12).

Blazer is optional in Terms 1 and 4 but can be worn on cooler days or to and from School. Blazer is compulsory in Terms 2 and 3 when travelling to and from School.

Jumper is optional but can be worn at School, or under the blazer to and from School. The jumper must not be worn on its own to and from School.

Trousers must not be substituted for other styles/brands.

PHYSICAL EDUCATION (PE) UNIFORM

GIRLS AND BOYS

KINDERGARTEN – YEAR 6



Summer

Worn two days per week in Terms 1 and 4.

Crested polo shirt based on student House with Arden sports shorts, Arden sports socks and white runners suitable for sport and PE activities (no skate shoes are permitted).

The track jacket is optional. Track pants are not worn during Terms 1 and 4.

Winter

Worn two days per week in Terms 2 and 3.

Arden track jacket and track pants with crested polo shirt based on student House, Arden sports socks and white runners suitable for sport and PE activities (no skate shoes are permitted).

PHYSICAL EDUCATION (PE) UNIFORM

GIRLS AND BOYS

YEARS 7-12



Summer/Winter

Worn for Physical Education lessons.

Crested polo shirt based on student House with Arden sports shorts, Arden sports socks and white runners suitable for sport and PE activities (no skate shoes are permitted).

The track jacket is compulsory and cannot be substituted for the School jumper.

The track pants are optional.

The sports bag is required to bring PE uniform to School on the appropriate days.

GIRLS' SWIMWEAR

YEARS 2-12



Arden swimwear must be worn at all School swimming events and carnivals. Options include:

Full piece swimmers.

Rash vest.

Swim caps (silicon) in relevant House colour.

Board shorts (for Years 5-12 only).

BOYS' SWIMWEAR

YEARS 2-12



Arden swimwear must be worn at all School swimming events and carnivals. Options include:

Jammers.

Rash vest.

Swim caps (silicon) in relevant House colour.

Board shorts (for Years 5-12 only).



Bucket



Legionnaires

The students have a choice of two hats. Wearing a hat is compulsory during morning tea, lunch and sport.

These hats must not be worn to and from School and should be left at School. The panama hat for girls and the baggy green cap for boys are the hats worn to and from School.



Cap



Bucket

The students have a choice of two hats. Wearing a hat is compulsory during morning tea, lunch and sport.

Students are encouraged to wear their hat to and from School for sun protection where necessary.

BAGS



Pre-School - Year 2



Years 3-6



Years 7-12



Excursion Bag



Sports Bag



Library Bag



Music Bag



Wet Bag

Pre-school - Year 2

Arden backpack with top opening.

Years 3-6

Arden backpack which is larger than Pre-school to Year 2 version. Designed and approved by Chiropractic Association.

Years 7-12

Arden backpack which is larger than Junior Campus options. Designed and approved by Chiropractic Association.

Sports Bag

Optional for students in Years 3-6. Compulsory for students in Years 7-12. Must not be used in place of the School backpack.

Excursion Bag

Compulsory for excursions and can also be used for swimming.

Library Bag

For Junior Campus students in House colours.

Music Bag

For Junior Campus students.

Wet Bag

For Pre-School students only.

ACCESSORIES



Apron



Paint Smock



Raincoat



Umbrella



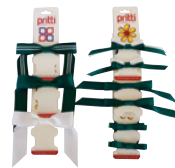
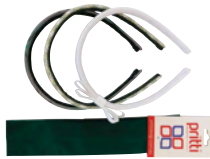
Belt



Scarf



House Badges



Hair Accessories



Garters

Apron

Compulsory for Design and Technology students.

Black Belt

Available in sizes 60cm to 120cm long.

Garters

Elastic garters for knee-high socks.

Hair Accessories

Large range of hair elastics, bows, clips, scrunchies, headbands in green, white or School uniform fabric.

House Badge

Birnam, Jenolan or Sherwood House badges are available.

Paint Smock

Available in many colours and sizes.

Raincoat

Compulsory for Pre-school to Year 6 students. Umbrellas are discouraged for Pre-school to Year 6 students.

Scarf

Warm wool blend available in two sizes. Not compulsory.

Spare Buttons

Available at the Uniform Shop.

Umbrella

For Secondary Campus students only.

ARDEN



AN ANGLICAN SCHOOL
FOR GIRLS AND BOYS

PRE-SCHOOL AND
JUNIOR CAMPUS

39-43 Wongala Crescent
Beecroft NSW 2119
T. 02 9484 1146

SECONDARY
CAMPUS

6B Essex Street
Epping NSW 2121
T. 02 9484 1146

PO Box 23
Beecroft NSW 2119
www.arden.nsw.edu.au
ABN. 22 851 187 489

Arden Anglican School Uniform